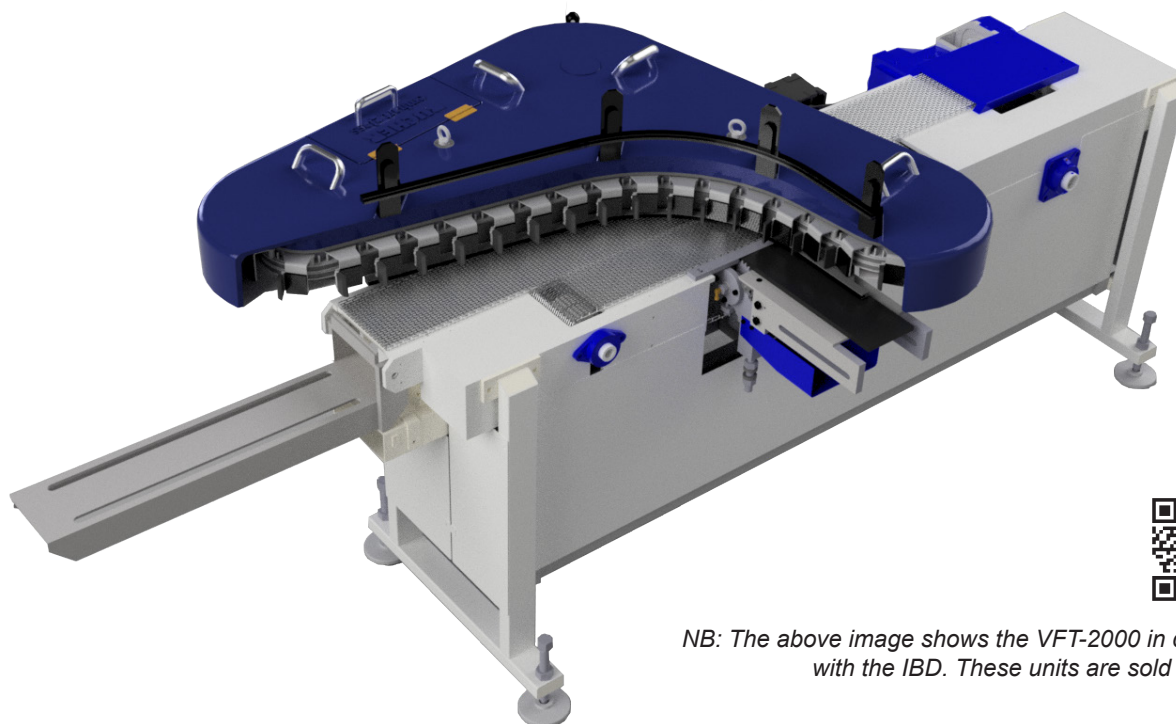


VFT-2000 Transfer Unit



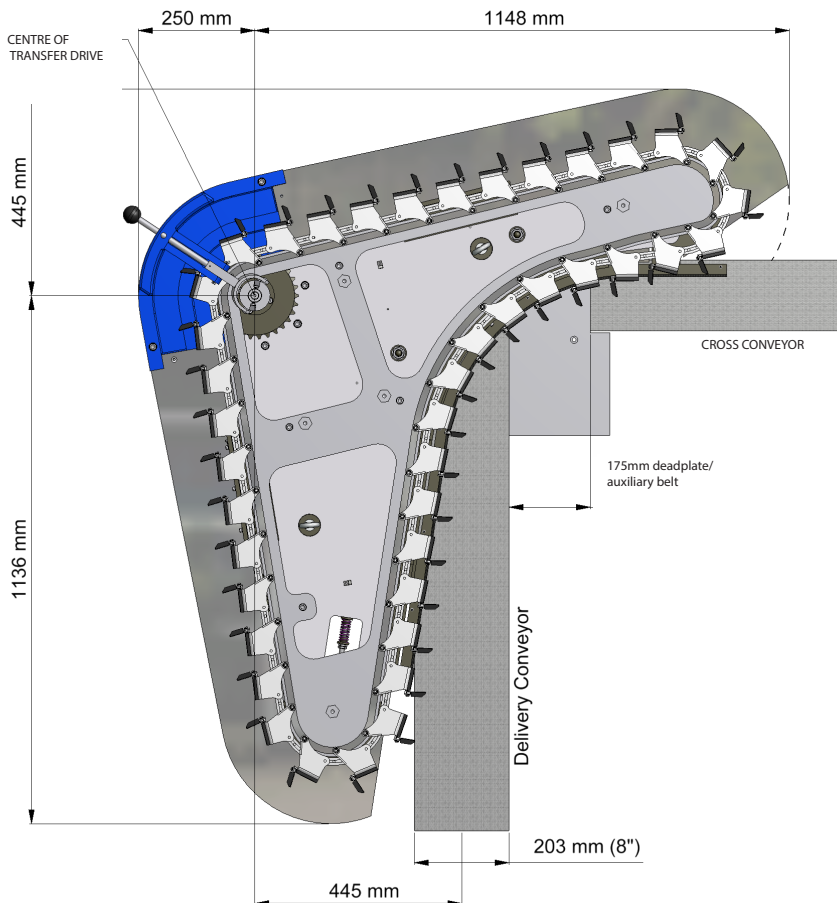
NB: The above image shows the VFT-2000 in conjunction with the IDB. These units are sold separately.

The VFT-2000 Transfer Unit is purposely designed for handling containers produced on TG and QG production machines. The gradual collection of the containers at the entrance to the transfer, along with a smooth, large radius curve and unique finger motion at the exit, ensures that bottles are transferred onto the cross conveyor accurately.

Features and Benefits

- 2 finger sizes
- 4 finger spacing configurations
- Designed for TG or QG production
- Unique finger retract system
- 'Quick Change' fingers
- Transfers containers from 40mm to 96mm diameter
- Adjustable top and bottom ware guides
- Spacing reduced through transfer
- Reduced job set-up time
- Enhanced container stability
- Recommend to be used in conjunction with STK/9433L/R Independent Belt Drive or 175mm deadplate.
- Reliable cross conveyor spacing
- Minimal spares holding
- Round containers - consistent ware handling up to 1,000 BPM
- Flask production at 300-450 BPM
- Intermediate fingers from 12 fingers and above
- For optimum performance we recommend use with Sheppee Cross Conveyor (CCA) and Independent Belt Drive (IDB)
- Recommended service intervals 12 months
- Carbon or SSB insulation

VFT-2000 Transfer Unit



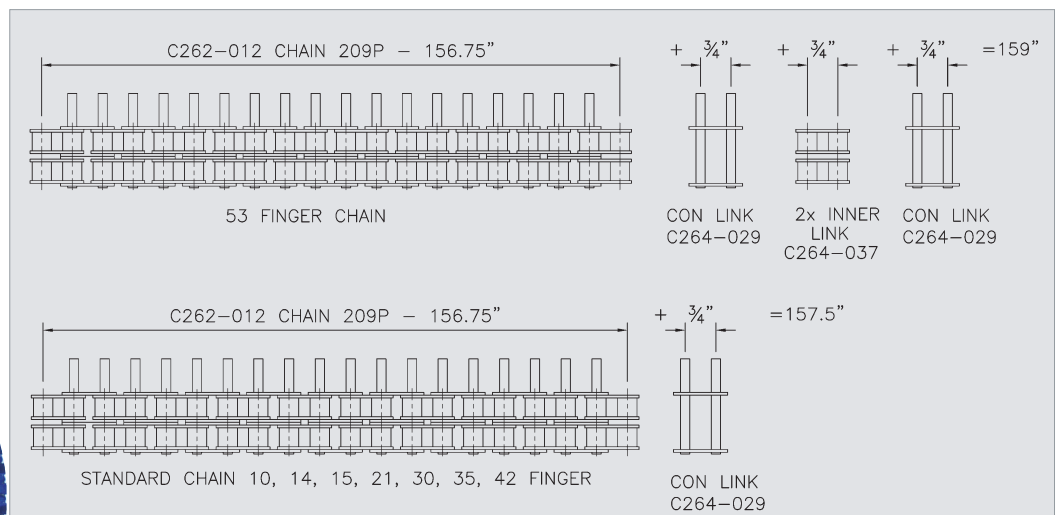
Technical Specifications

Operating speed:	Up to 1000 BPM
Standard chain length:	157.5"
Standard chain pitch:	3/4" Duplex
Number of teeth on sprocket:	30
Chain movement per revolution of drive shaft:	22.5"

Installation Details and Service Requirements

- Connection to Lincoln lubrication
- Can be driven by servo or synchronous motor drive
- Can work with all I.S. machine drive systems
- Transfer can be used in conjunction with Sheppee ITD-8200 Transfer Drive Unit.

Chain Length Data



VFT-2000 Transfer Unit

Finger Spacing Options

Number of Fingers	Finger Spacing	Finger Part Number *	Intermediate Finger Part Number	Container Size Limits
42	3 3/4"	VFT-1008-01L/R		68mm
35	4 1/2"	VFT-1008-02L/R		78mm
30	5 1/4"	VFT-1008-02L/R		92mm **
21	7 1/2"	VFT-1008-03L/R	VFT-1008-P-L/R	120mm
15	10 1/2"	VFT-1008-03L/R	VFT-1008-P-L/R	170mm
Special***				
53	3"	VFT-1008-01-L/R		52mm

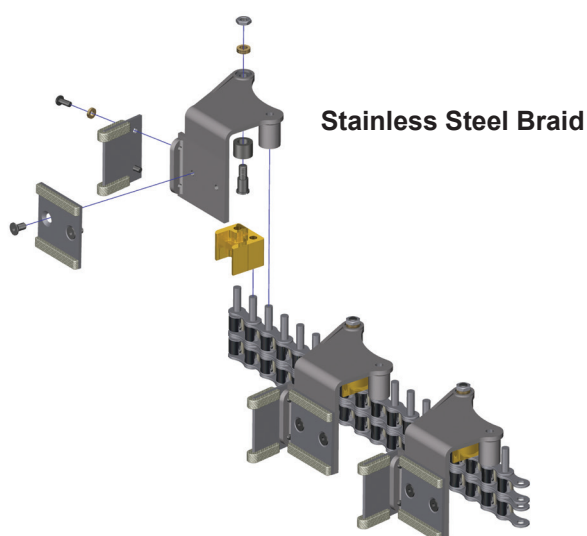
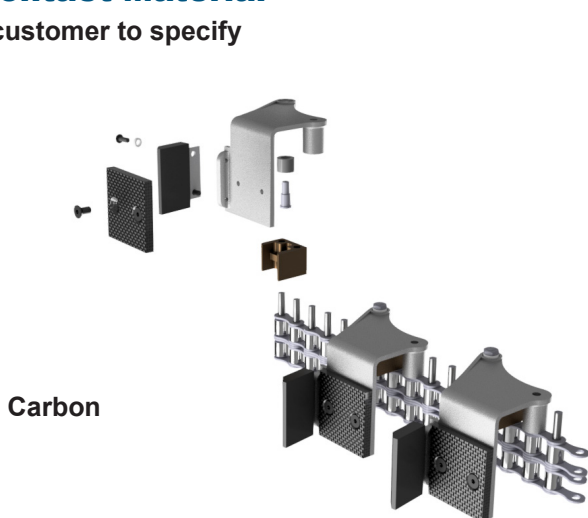
* For SSB (stainless steel braid) option, add "-SSB" to the end of the part number.

** For diameter 92mm-96mm special pusher pad required.

*** Special chain required of 159"

Contact Material

- customer to specify



Telephone assistance

Telephone assistance is available for all Sheppee International customers, according to the times given below.

Standard office hours telephone assistance

Monday to Thursday 08.30 - 17.15 (GMT)
Friday 08.30 - 13.00 (GMT)

Out of office hours Telephone Assistance

Monday to Thursday 17.15 – 08.30 (GMT)
Friday 13.00 – 23.59 (GMT)
Saturday, Sunday and Public Holidays - 24 hour
Contact: **+44 844 826 5421** (UK only)
+44 117 987 5421 (International)

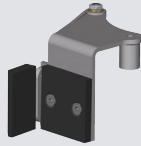
Contact: **+44 1904 608999**

Email Contact: **support@sheppee.com**

VFT-2000 Transfer Unit

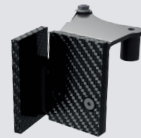
Variable and Consumable Item Identification Chart

Part: VFT-1008-01-L/R
Size 01 Finger Assembly



Part: VFT-1008-02-L/R
Size 02 Finger Assembly

Part: VFT-1008-01-L/R-75
Size 01 Tall Finger Assembly



Part: VFT-1008-02-L/R-75
Size 02 Tall Finger Assembly

Part: VFT-1013L/R
Intermediate Finger



Part: HST-117-01
Size 01 Pusher Pad

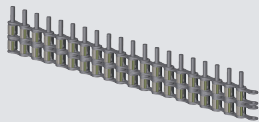


Part: HST-117-03
Size 02 Pusher Pad

Part: HST-022-INV
Back Pad

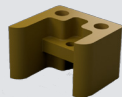


157.5" Chain
Part: VFT-1011



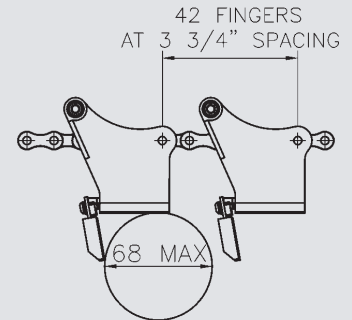
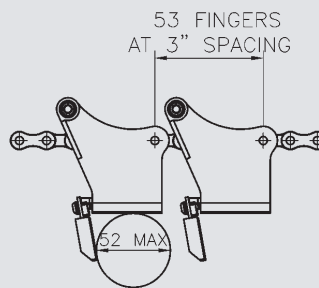
159" Chain
Part: VFT-1011-53

Finger Carrier
Part: VFT-028

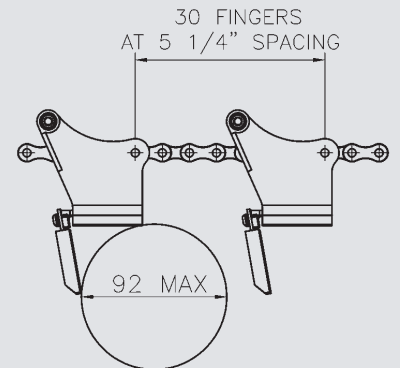
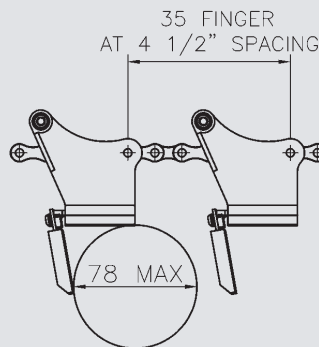


Container size limits

WITH FINGER ASSY No. VFT-1008-01L/R



WITH FINGER ASSY No. VFT-1008-02L/R



*For diameter 93mm-96mm special pusher pad required

Ware Guide Insulator
Part: VFT-007



Ware Guide Insulator
Part: VFT-008

