

## CAST IRON & STEEL TROUGHS

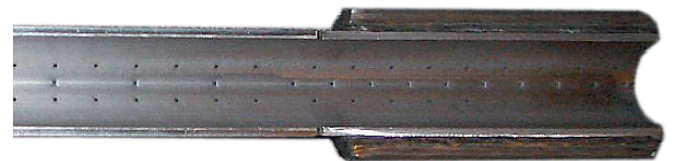
### Cast Iron Trough Advantages

- Stable Gob Loading
- Consistent Temperature
- 8 mm thickness
- High quality finish

### Steel Trough Advantages

- Light weight makes it easier for job change
- Quick order time
- High manufacturing quality
- Economical
- 4 x 6 mm thick

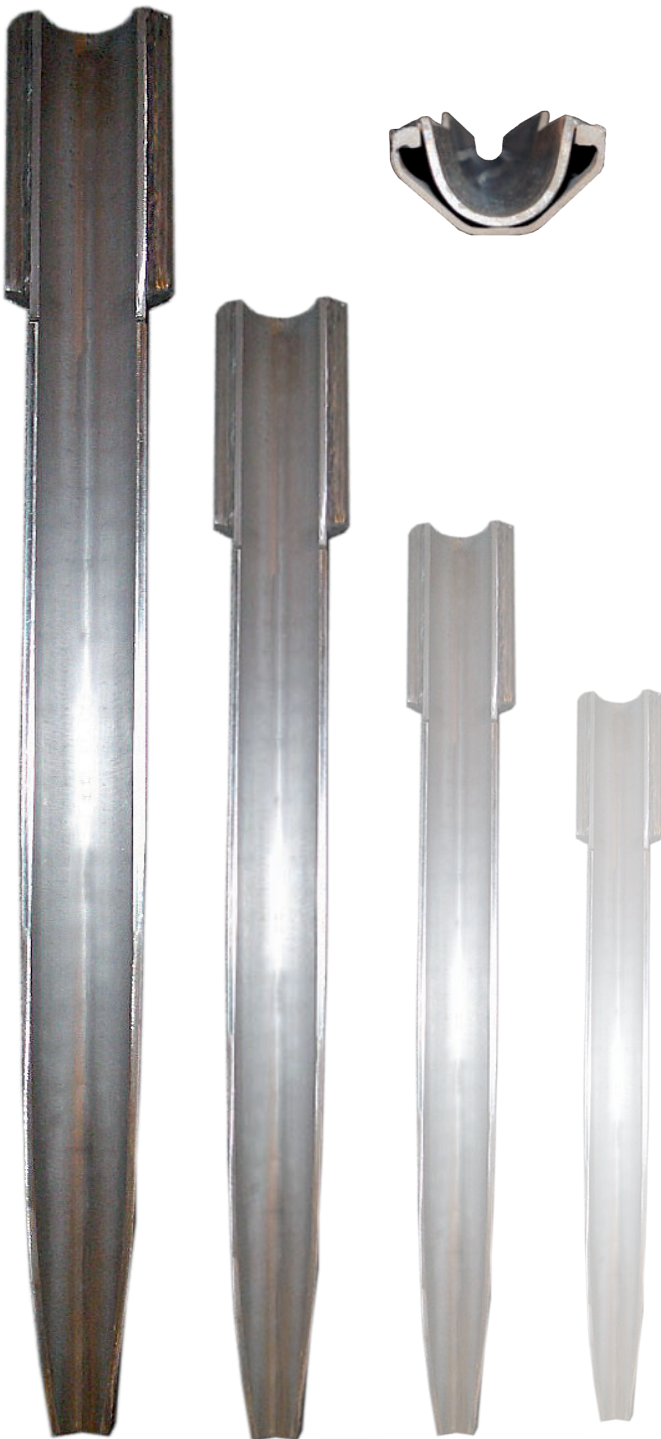
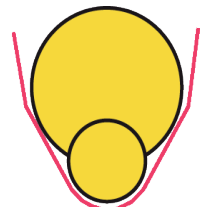
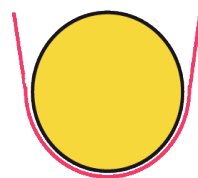
### AIR RIDE TROUGHS also available



For an IS 10 sections QG producing Beer Bottle, the typical need in air is :

- High pressure fan : 1500mm WC
- Flow : 0,85m<sup>3</sup>/s

Trough available in U shape & V shape



Alain BOURY  
International Sales Manager

Mobile: + 33 (0)6 71 84 31 08 - E-Mail: alain.boury@rondot-sa.com



FRANCE



Stéphane ROSSIGNOL  
Mickaël MEYRONNEINC  
Phone: + 33 (0)4 72 52 08 60  
Fax: + 33 (0)4 78 47 48 66  
E-Mail: sales@rondot-sa.com



GERMANY



Alexander RADDON  
Roger PORT  
Andrzej HOLOWNIA  
Phone: + 49 (0)30 7809 7720  
Fax: + 49 (0)30 7809 7715  
E-Mail: info@gr2.com



GREECE



Lucjan GNOTH  
Phone: + 30 213 0253 654  
Mobile: + 30 694 6237 522  
E-Mail: lucjan.gnoth@rondot-sa.com



ITALY



Alessandro MORATA  
Phone: + 39 (010) 374 2161  
Fax: + 39 (010) 374 0189  
Mobile: + 39 (340) 006 5810  
E-Mail: alessandro.morata@glamoro.it



RUSSIA



Andrew GRISHIN  
Phone: + 7 (495) 645 5936  
Fax: + 7 (495) 645 5937  
Mobile: + 7 (917) 565 3114  
E-Mail: andrew.grishin@rondot-sa.com



SPAIN



Paco ESPINAR  
Phone: + 34 (0) 955 86 77 76  
Fax: + 34 (0) 955 86 77 76  
Mobile: + 34 679 41 10 39  
E-Mail: paco.espinar@crisa-vidrio.com



THAILAND



Asawin WANNOPAT  
Phone: + 66 (0) 2559 3720  
Mobile: + 66 (0) 81-9331190  
E-Mail: asawin.wannopat@grt.co.th



UK



Mark JOHNSTON  
Andy STEVENSON  
Phone: + 44 (0)12 46 266 000  
Fax: + 44 (0)12 46 269 269  
E-Mail: sales@graphoidal.com



USA



Joe KEANEY  
Eric BLUM  
Phone: +1 201 434 3600  
Fax: +1 201 434 1967  
E-Mail: joe.keaney@specialtyrondot.com  
E-Mail: eric.blum@specialtyrondot.com

**Local Distributor**

