

Tri-Flex Lehr Loader



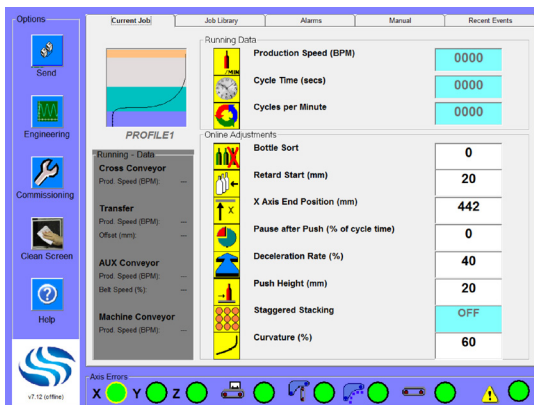
The Tri-flex lehr loader is suitable for handling high speed production. Due to the machine's flexible control, it is also the industry's leading choice for manufacturers of unstable cosmetic and pharmaceutical products. It is capable of operating with a cross conveyor speed of up to 36 meters per minute and is available with various options such as a fully electronically adjustable ware-steady mechanism for articles that need extra stability when being loaded into the lehr. This machine has full job storage facility, giving reduced set-up time and down time.

Features and Benefits

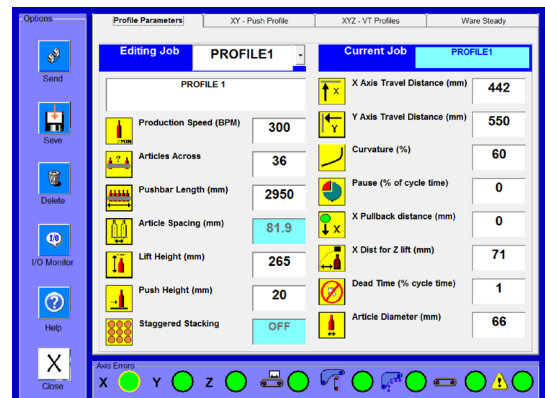
- Programmable pushbar motion
- Easy to use 15" colour touch screen interface
- Full job storage and on-line editing facility
- Easy, accessible user help files
- Staggered stack and bottle sort facility
- Ware reject control
- Integral control panel & cooling system as standard
- 3 identical brushless AC Servo motors
- Remote diagnostic facility available
- Synchronised by trigger pulse from IS machine
- Password protected operational features
- Operator interface available in customer's language
- Mounting rails fitted as standard
- Adjustable pushbar mounting brackets
- Industrial computer

Tri-Flex Lehr Loader

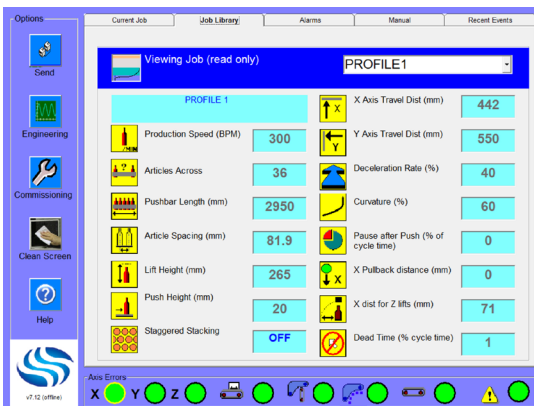
Example of Screen Images



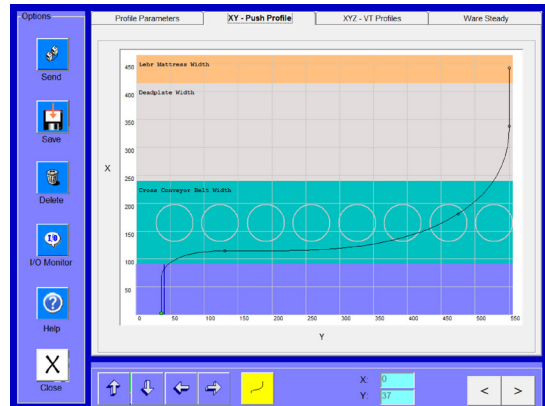
Current Job view



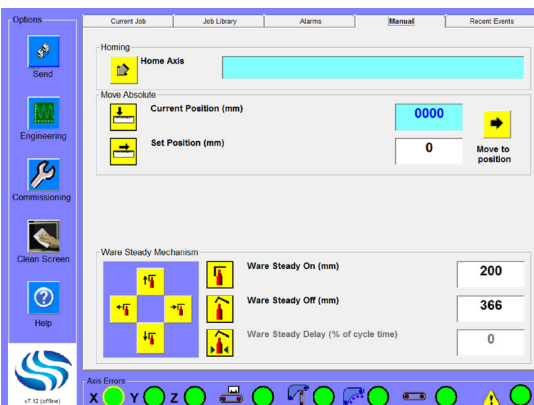
Profile Parameters



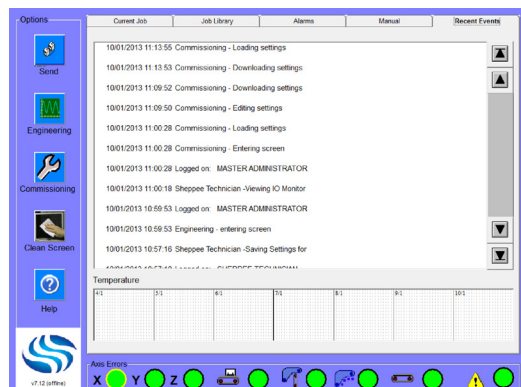
Job Library



XY Push profile



Manual Page

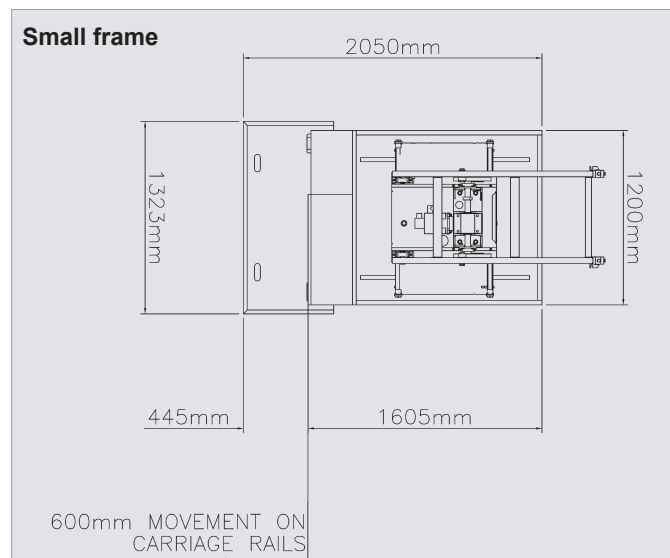
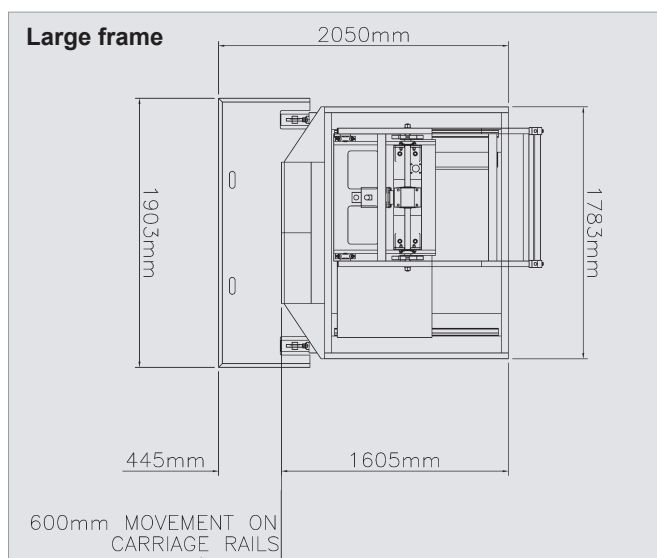


Recent Events Log



Tri-Flex Lehr Loader

Triflex footprints



Available Options

- 4th Axis drive to drive cross conveyor
- 5th Axis drive to drive ware transfer
- 6th Axis to drive machine conveyor
- Remote stand alone control panel
- Large and small frame sizes
- Fully adjustable ware-steady assembly with on-line electrical adjustments
- Air-conditioning unit for integrated controls
- Uses integrated grease pump and timer control
- Back-up laptop

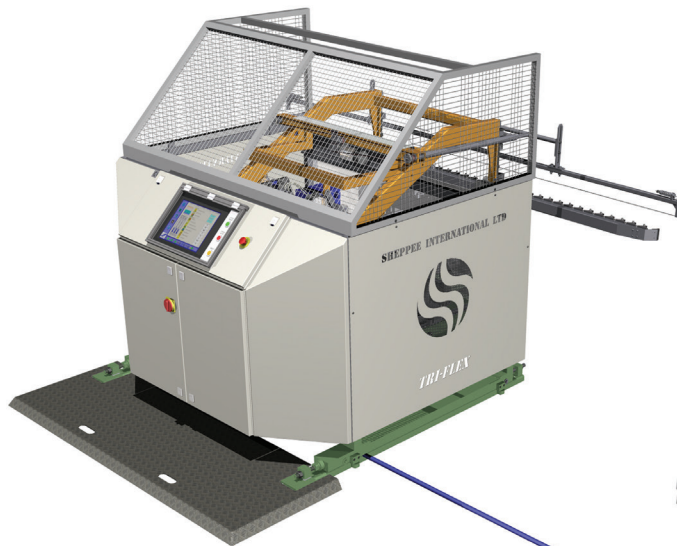
Service Requirements

- Connection to centralised Lincoln lubrication system (if applicable)
- Lubrication frequency – 4-6 cycles per hour depending on speeds
- Trigger pulse from IS machine controller
- Compressed air

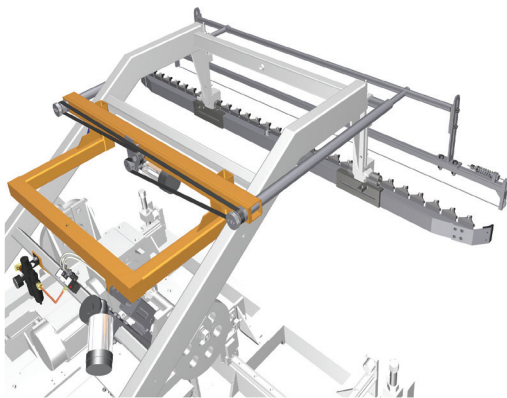
Technical Specification

Operating speed:	Up to 20 cycles per minute (maximum cross conveyor speed of 36m/min)
Controller type:	Servo drives with integrated motion control
Minimum Lehr operating height:	700mm
Operating temperature of motors:	Up to 125°C
Compressed cooling air consumption	3 minimum - 5 Bar recommended
Control panel cooling air consumption	30m ³ /hour (Max)
Required ware steady air pressure	0-3Bar
Ware steady air consumption	0.09m ³ /hour at 10 cycles per minute

Tri-Flex Lehr Loader



Tri-flex with Remote Control Panel



Tri-flex with Ware Steady and pushbar

Hot line/Emergency service

Telephone assistance is available for all Sheppee International customers, according to the times given below.

Standard Office hours Telephone Assistance

Monday to Thursday 08.30 - 17.15 (GMT)
Friday 08.30 - 13.00 (GMT)

Contact: **+44 1904 608999**

Hot Line hours Telephone Assistance

Monday to Thursday 17.15 – 08.30 (GMT)
Friday 13.00 – 23.59 (GMT)
Saturday, Sunday and Public Holidays - 24 hour

Contact: **+44 844 826 5421** (UK only)
+44 117 987 5421 (International)

Email Contact: **support@sheppee.com**

