



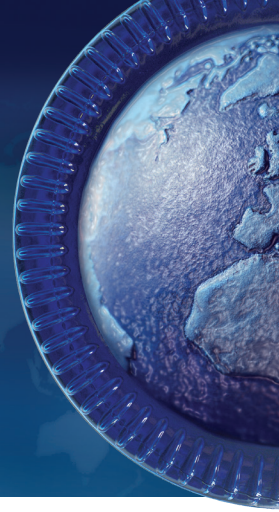
CCA-1200 Cross Conveyor



The cross conveyor has to work in difficult conditions and has a major influence in overall ware handling efficiency. The CCA-1200 Cross Conveyor has many in-built features, which allow for critical areas to be adjusted during a normal production run, reducing fallen ware and essential for accurate lehr loading and improved production efficiencies.

Features and Benefits

- Simple robust construction
- Individual deadplate assembly with both tilt and lift feature
- Adjustable under-belt transfer deadplate
- Adjustable idle roller
- Adjustable wear plate
- Full adjustment of height and linear position of conveyor beams
- Quick interchangeable deadplates
- Quick change upper and lower wear strips
- Ability to counteract heat distortion
- Low and simple maintenance
- Safe and reliable operation
- Consistent and trouble free container handling
- Can be used in conjunction with Sheppee Ware Handling System
- Suitable for any lehr width



CCA-1200 Cross Conveyor

Technical Specification

Drive Requirements:

- For use with customer's synchronous or servo motor or integrated with Sheppee Ware Handling System.

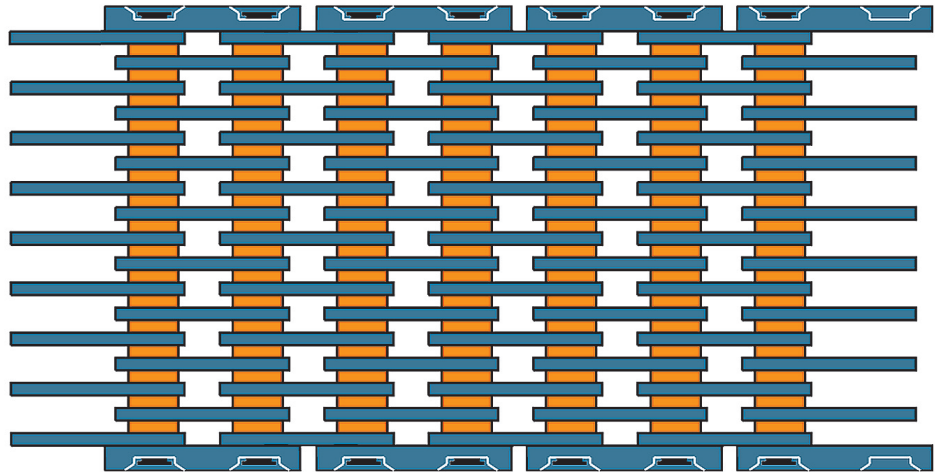
Service Requirements:

- Connection to centralised Lincoln lubrication system (if applicable).

Conveyor Chain

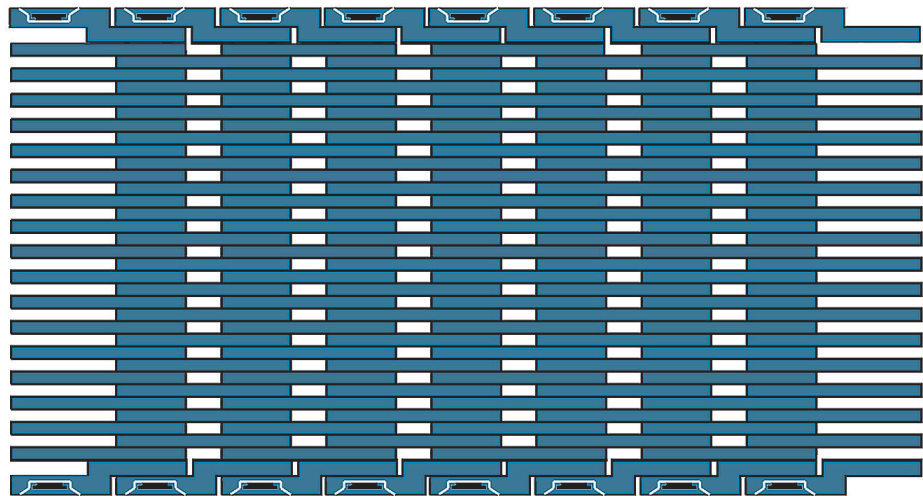
LINK AND SPACER

Suitable for larger containers and for under-belt cooling.
(Recommended as standard for containers 40mm diameter and above)



ALL LINK *

For maximum container stability, particularly suitable for very small or unstable glassware.
(Recommended for containers less than 40mm diameter)

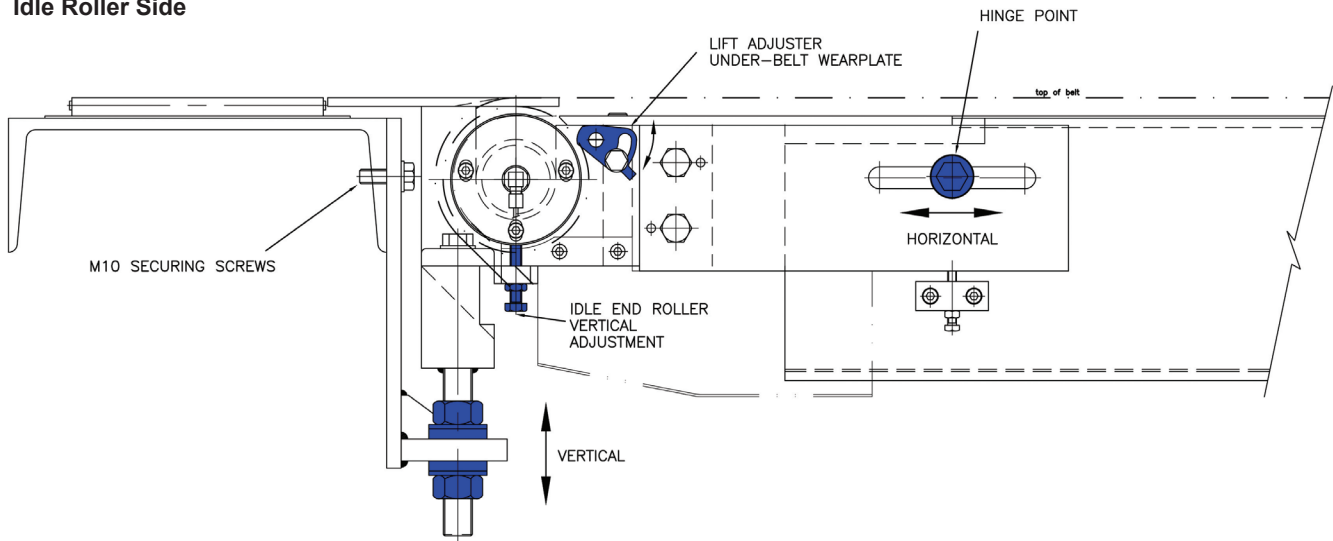


*Additional cost

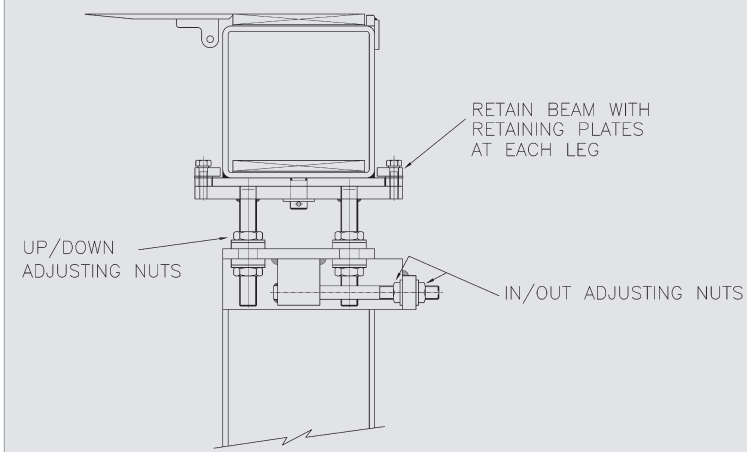
CCA-1200 Cross Conveyor

CCA-1200 Drawings

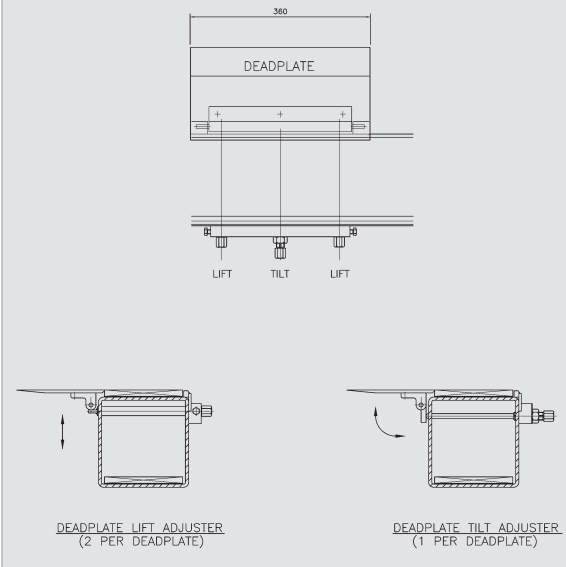
Idle Roller Side



Floor Mounted Legs



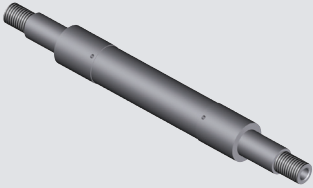
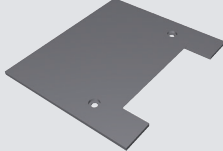
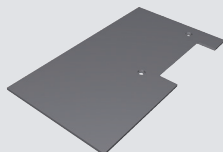
Deadplate Adjust



CCA-1200 Cross Conveyor

Consumables

Part Number:	Description:	
CC/046	Deadplate	
CC/454	Idler Sprocket	
CCA/1165	Idle Sprocket Assembly	
C363-M020-SFT-MS44	Flange Bearing Unit	

Part Number:	Description:	
CC/239	Shaft	
CC/304	Transfer Deadplate	
CC/439	Transfer Deadplate*	

(*when running with a VFT-1000 transfer)

For additional parts refer to assembly drawings.

Telephone assistance

Telephone assistance is available for all Sheppee International customers, according to the times given below.

Standard office hours telephone assistance

Monday to Thursday 08.30 - 17.15 (GMT)
Friday 08.30 - 13.00 (GMT)

Contact: **+44 1904 608999**

Email Contact: support@sheppee.com

Out of office hours telephone assistance

Monday to Thursday 17.15 – 08.30 (GMT)
Friday 13.00 – 23.59 (GMT)

Saturday, Sunday and Public Holidays - 24 hour

Contact: **+44 844 826 5421** (UK only)

+44 117 987 5421 (International)