

# GRAPHOIDAL

---

## Shear Spray Bars

---

*Graphoidal Spray Bars and Mounting Systems are available for a wide range of feeder mechanisms.*



- *Blade cooling and lubrication achieved by fine atomisation.*
- *No internal wear parts.*
- *Nozzle blockages reduced due to venturi action.*
- *Available for all shear mechanisms.*
- *Optional; mounting systems are available.*
- *Environmental impact is reduced.*

# 8mm thick Stainless Steel Ultraslim Spray Bars

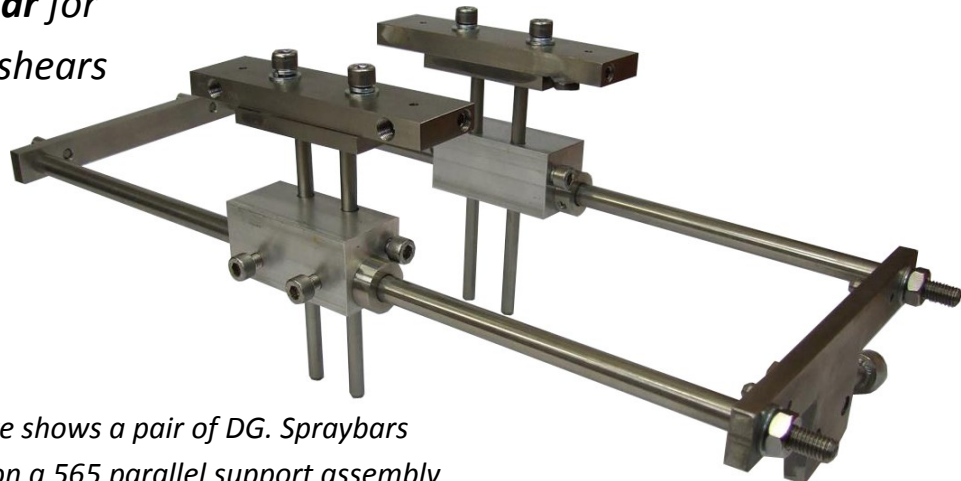
**GRAPHOIDAL**  
www.graphoidal.com



- **Ultraslim Spray Bars** for spraying from above when shearing close to the orifice is required.
- Triple point outlets (left) are an option for improved cooling efficiency on the very high speed machines for optimal performance.

# 12.5mm thick Stainless Steel Spray Bars

- Available as **High Efficiency** for spraying from above the shears.
- Or a **Short Series Spray Bar** for spraying from below the shears (shown on adjacent picture)

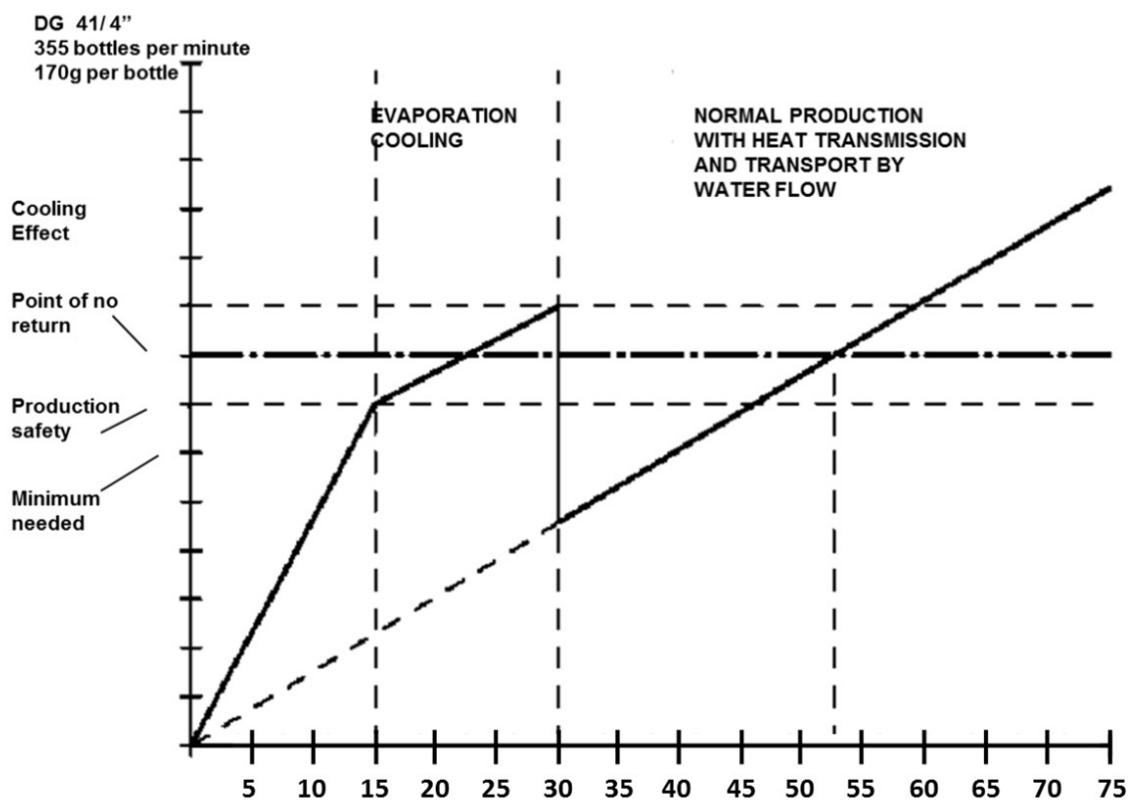


- This picture shows a pair of DG. Spraybars mounted on a 565 parallel support assembly

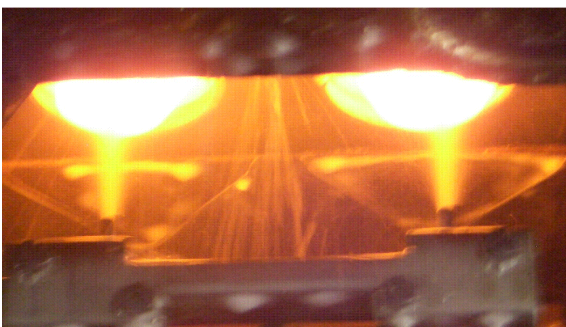
# Reducing your Oil and Water Consumption

## Fine Atomisation

*Fine atomisation of cooling emulsion achieves high efficiency evaporation cooling.*



*Graphoidal Evaporation Cooling has been proven to reduce water and oil consumption by up to 70% compared with traditional spray cooling.*

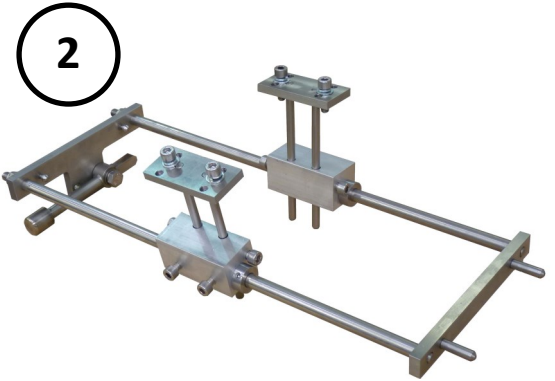
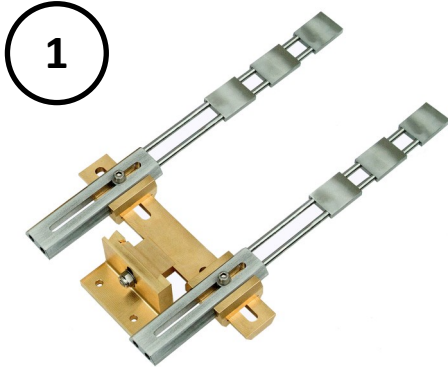


*Traditional Spray Cooling*



*Graphoidal Evaporation Cooling*

# Accessories for Spray Bars

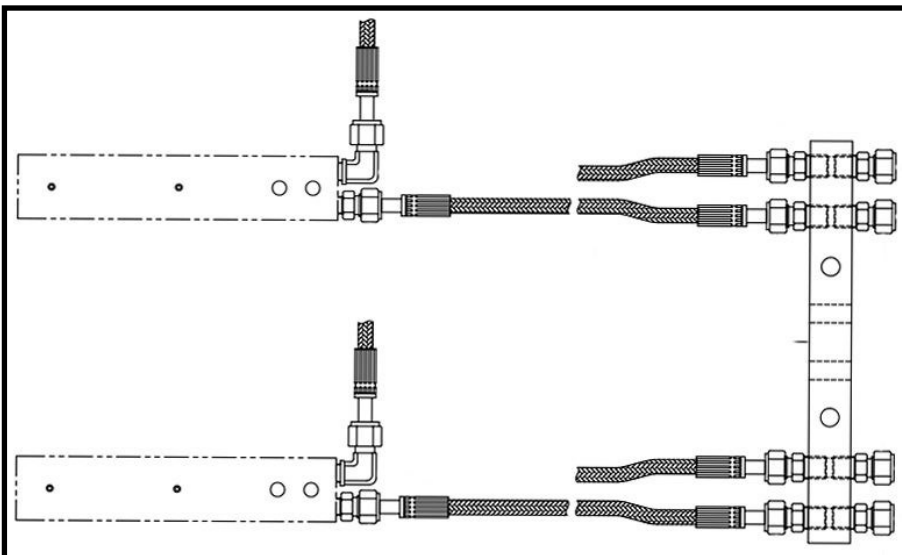


1) Support assembly for spraying from above shears.

2) Short series spray bars for use with a standard parallel mechanism.

3) Spray Bar Cover Plates.

# Connection Kits for Spray Bars



Standard connection kit—others available

**Graphoidal Developments Ltd**  
Broombank Road  
Chesterfield S41 9QJ  
England  
Tel: +44 (0) 1246 266000  
Fax: +44 (0) 1246 269269  
Email: [sales@graphoidal.com](mailto:sales@graphoidal.com)  
Website: [www.graphoidal.com](http://www.graphoidal.com)