

Dura Temp Materials

DESIGNATION	MATERIAL	INTENDED AREA OF USE
DT-1	Silicone Composite (Compression Grade)	Sweepout Transfer Ware Guides
DT-2	Silicone Composite (Transfer Grade)	Sweepout Transfer
DT-18	Calcium Silicate Hydrate	Lehr Bar
DT-21	Calcium Silicate Hydrate	Lehr Bar
DT-24A	Stainless Steel Felt bonded to a High Temperature Fabric	Tableware Applications
DT-54	Stainless Steel Felt	Tableware Applications
DT-60	High Temperature Carbon Composite	Sweepout Transfer Lehr Bar
DT-80	Carbon-Fiber-Carbon (Woven Strands)	Sweepout Transfer Lehr Bar Ware Guides



Our Mission: To Be The Best Provider of Hot Ware Handling Solutions for Glassmakers Worldwide

About Dura Temp

Dura Temp Corporation is an industry-leading supplier of hot ware handling solutions for glassmakers worldwide. From the gob forming area through the lehr loader, Dura Temp offers superior materials, quick-change parts and assemblies, and technical experience and support that allow glassmakers to achieve optimum results in the hot-end. Dura Temp is continuously evaluating the changing needs of the glass industry and adapting the solutions it offers to best meet these needs.

Dura Temp Offers

- **Technical Support for existing product applications and new product development**
- **Quick order turn-around and delivery time**
- **Standard products and custom solutions**
- **Local market support through an extensive network of agents and distributors**



Dura Temp Corporate Office
 949 S. McCord Road Holland, Ohio 43528 USA
Phone: +1-419-866-4348
Fax: +1-419-866-4656
Email: sales@duratemp.com

Dura Temp Corporate Office
 949 S. McCord Road Holland, Ohio 43528 USA
Phone: +1-419-866-4348
Fax: +1-419-866-4656
Email: sales@duratemp.com

Improving Products by

 www.duratemp.com

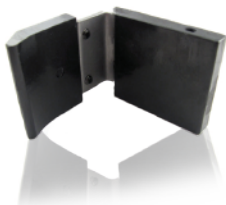
Quick-Change Sweepout Assemblies

Dura Temp's sweepout assemblies incorporate a "quick-change" system for minimal down time and easy pocket changes.



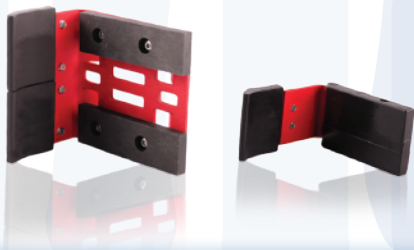
Sweepout Pocket

The unique "drop-on" design of Dura Temp sweepout pockets creates an ease of use that is the best in the industry. Dura Temp sweepout pockets can be modified to fit almost any sized and shaped container, including flasks, perfume, pharmaceutical, and odd-shaped ware.



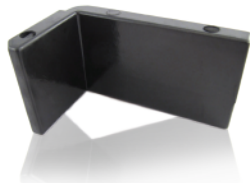
HW Series Sweepout Pockets and Transfer Paddles

The HW Series sweepout pockets and transfer paddles are a hybrid of DT-2 (silicone composite material) and DT-60 (high-temperature carbon composite). The HW Series can withstand unusually hot applications and environments while providing a long service life.



Molded Transfer Paddles

Dura Temp's standard transfer paddles are also quick-change design. Made from DT-2 material, they can be removed, cleaned, and reinstalled for an extended service life.



Cut Pads & Fingers

Dura Temp's contact fingers (MM/CM series) are comprised of DT-2 (silicone composite material) molded around metal reinforcing inserts. These fingers come standard on Dura Temp's quick-change pockets. Dura Temp offers several molded to size DT-2 contact pads, as well as DT-1 and DT-60 contact pads machined to specifications.



Ware Guides

Dura Temp offers curved and straight ware guides. The solid guides are made from strips of DT-1 material, assembled in a light-weight steel frame. The roller version consists of individually replaceable, free rotating rollers mounted in a steel channel. The roller design presents 360° of contact surface, which increases the life of the guide.



Lehr Bar

The Universal Lehr Bar Pocket is constructed of cast stainless steel for strength, yet its unique design gives it a similar weight to aluminum pockets. DT-60 (high-temperature-carbon composite) inserts are used in conjunction with this pocket and offer a long service life.



Tableware

Dura Temp provides several products which are manufactured specifically for tableware applications. These include a variety of molded components, stainless steel vacuum pads, molded and machined platens, fingers, and custom-designed parts.



Custom Applications

Dura Temp is able to provide solutions customized to customers' specifications. Contact us for more details.

