

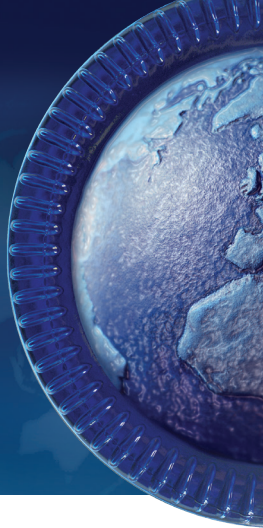
MRS-9000 Lehr Loader



The MRS-9000 is a 2 Axis servo-controlled lehr loader suitable for typical container production. With the linear and vertical axes each controlled independently, the machine is capable of operating with a cross conveyor speed of up to 22 meters per minute. Supplied with intergrated electronics as standard, the machine can be delivered with an optional electronic ware steady mechanism, as part of a multi-axis ware handling package, where the cross conveyor, ware transfer and IS machine conveyor controls are integrated into the MRS-9000 controls.

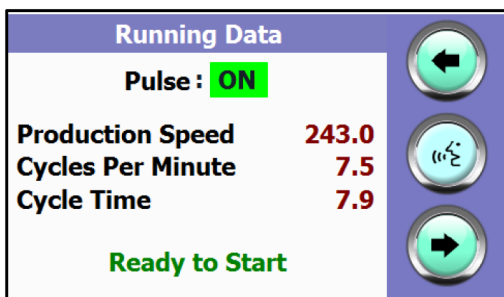
Features and Benefits

- On-line adjustments of pushbar
 - Deceleration/Acceleration
 - Advanced /Retard
 - Lift height adjustment
 - Adjustable end stroke position
 - Pull back control
 - Push height adjustment
- Manual jog features for all axes
- Built-in panel cooling system
- Dual linear bearings for wear-free linear movement
- 2 Identical brushless AC servo motors
- Colour touch screen
- Compact, low-profile design, allowing for minimal heat ingress
- Minimal spare parts package required
- Proven, reliable components
- Value-engineered to give rapid return on capital invested
- Mounting rails fitted as standard
- Drive status indication
- Optional ware-steady assembly
- Synchronised by trigger pulse from IS machine

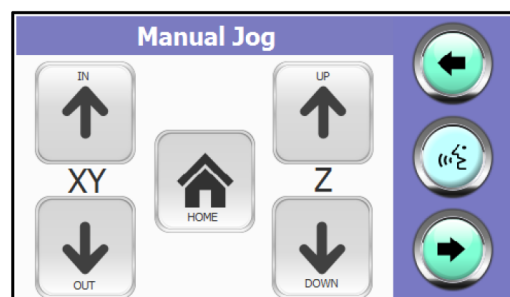


MRS-9000 Lehr Loader

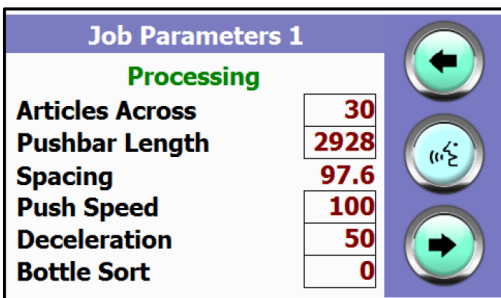
Example of Screen Images



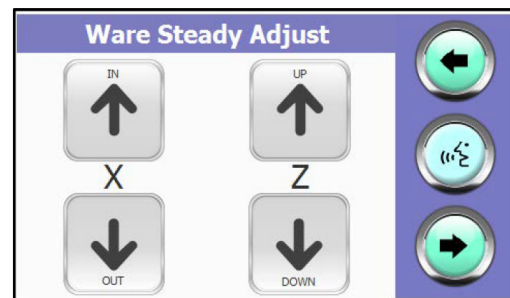
Running Data



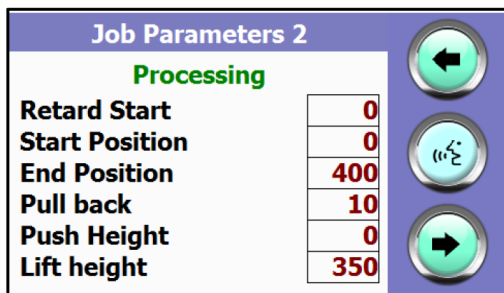
Manual Jog



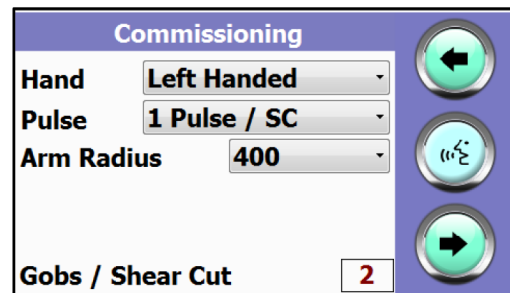
Job Parameters 1



Ware Steady Adjust



Job Parameters 2



Commissioning

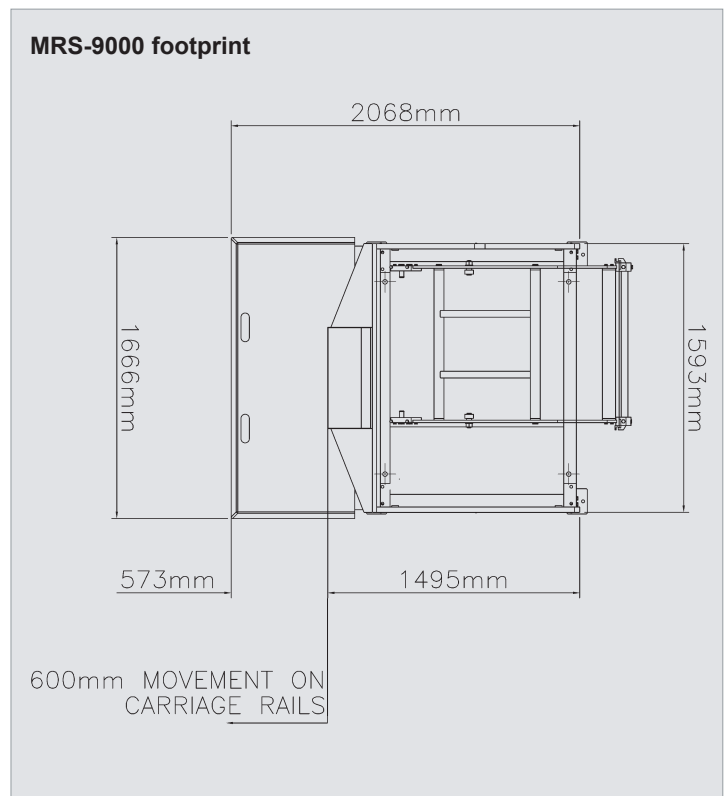
MRS-9000 Lehr Loader

Available Options

- Remote stand alone control panel
- 3rd axis drive to drive cross conveyor
- 4th axis drive to drive ware transfer
- 5th axis to drive machine conveyor
- Fully adjustable ware steady assembly with on-line electrical adjustments
- Air conditioning unit for integrated controls
- Integrated grease pump and timer control

Service Requirements

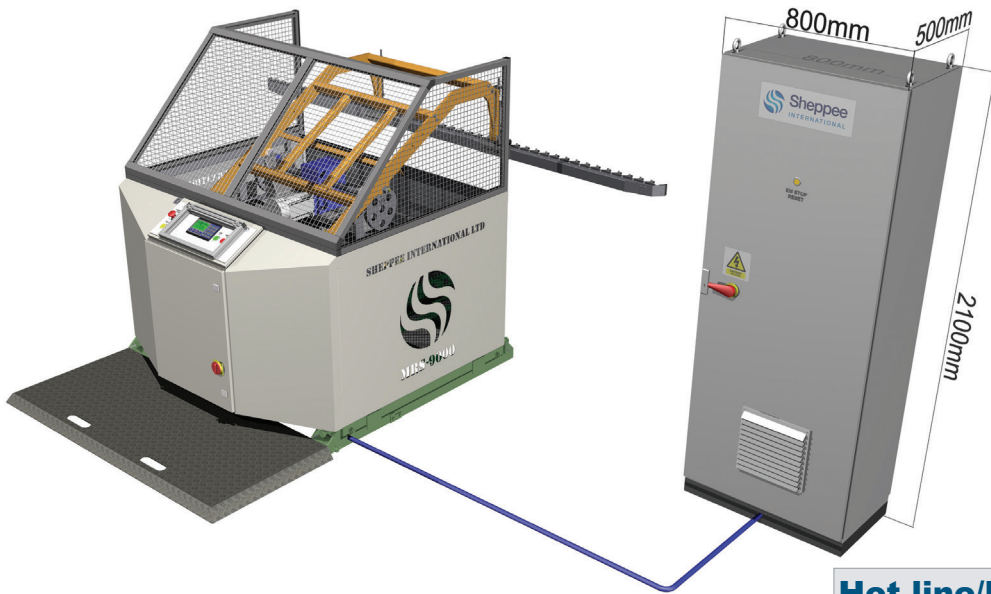
- Trigger pulse from IS machine
- Compressed air
- Lubrication frequency – 4-6 cycles per hour depending on speeds
- Connection to centralised Lincoln Lubrication system



Technical Specification

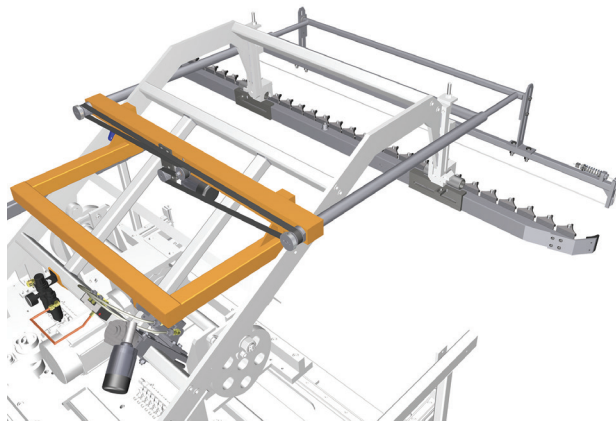
| | |
|---------------------------------------|---|
| Operating speed: | Up to 12 cycles per minute (maximum cross conveyor speed of 22m/min) |
| Controller type: | Servo drives with integrated motion control |
| Minimum lehr operating height: | 700mm |
| Operating temperature of motors: | Up to 125°C |
| Compressed cooling air consumption | 3 minimum - 5 Bar recommended |
| Control panel cooling air consumption | 30m ³ /hour (Max) |
| Required ware steady air pressure | 0-3 Bar |
| Ware steady air consumption | 0.09 m ³ / hour at 10 cycles per minute |

MRS-9000 Lehr Loader



MRS With Remote Control Panel

MRS with Ware Steady and Pushbar



Hot line/Emergency service

Telephone assistance is available for all Sheppee International customers, according to the times given below.

Standard Office hours Telephone Assistance

Monday to Thursday 08.30 - 17.15 (GMT)
Friday 08.30 - 13.00 (GMT)

Contact: **+44 1904 608999**

Hot Line hours Telephone Assistance

Monday to Thursday 17.15 – 08.30 (GMT)
Friday 13.00 – 23.59 (GMT)
Saturday, Sunday and Public Holidays - 24 hour

Contact: **+44 844 826 5421** (UK only)

+44 117 987 5421 (International)

Email Contact: support@sheppee.com

