

STRUTZ

CLS-200

CHAINLESS



Optimum Production Body & Shoulder Decorating Machine

STRUTZ CLS-200

Model 3/4 (Left-to-Right) shown. Models available in 2 to 8 colors decorating both body and shoulder areas simultaneously. Standard machine utilizes ceramic and thermal organic colors. Can also be made to use UV colors as an option.

CLS-200 BOTTLE LIMITS

| | Bottle Height | | Body Diameter | | Shoulder Diameter | |
|-------------|---------------|-------|---------------|-------|-------------------|-------|
| | Max. | Min.* | Max. | Min. | Max. | Min. |
| NARROW NECK | | | | | | |
| inches | 12.000 | 3.000 | 3.000 | 1.750 | 3.000 | 1.062 |
| mm. | 304 | 76 | 76 | 44 | 76 | 26 |

*Bottle height less than 6 in. may require special tooling.

Screen Decorating Equipment and Accessories

Large Bottle Body & Shoulder Decorating Machine

CLS-175

CHAINLESS

decorates up to 1.25 liter



STRUTZ CLS-175

Model 3/4 (Right-to-Left) shown. Models available in 2 to 8 colors decorating both body and shoulder areas simultaneously. Standard machine utilizes ceramic and thermal organic colors. Can also be made to use UV colors as an option.

CS-175 BOTTLE LIMITS

| | Bottle Height | | Body Diameter | | Shoulder Diameter | |
|-------------|---------------|-------|---------------|-------|-------------------|-------|
| | Max. | Min.* | Max. | Min. | Max. | Min. |
| NARROW NECK | | | | | | |
| inches | 13.500 | 3.000 | 3.750 | 1.750 | 3.250 | 1.062 |
| mm. | 342 | 76 | 96 | 44 | 88 | 26 |
| WIDE NECK | | | | | | |
| inches | 12.000 | 3.000 | 3.750 | 1.750 | 3.250 | 1.062 |
| mm. | 304 | 76 | 96 | 44 | 88 | 26 |

*Bottle height less than 6 in. may require special tooling.



CLS-200

Chainless High Production Body and Shoulder Decorating Machine

The CLS-200 is a revolutionary design built for decorating a typical 12 oz. beverage bottle with HIGH ACCURACY at speeds of up to 200 BPM. This new design replaces the carrier conveyor link system with ULTRA PRECISION CONTINUOUS MOTION CAMS for a more accurate, smoother, and faster machine. At 200 BPM, it can hold color-to-color registration at +/- 0.2mm. The complete second generation drive system now utilizes HIGH PERFORMANCE synchronous timing belts replacing the original drive gears for an even smoother operation. Machines are available in Left-to-Right or Right-to-Left configurations which optimize floor space and manpower when multiple decorators are used.

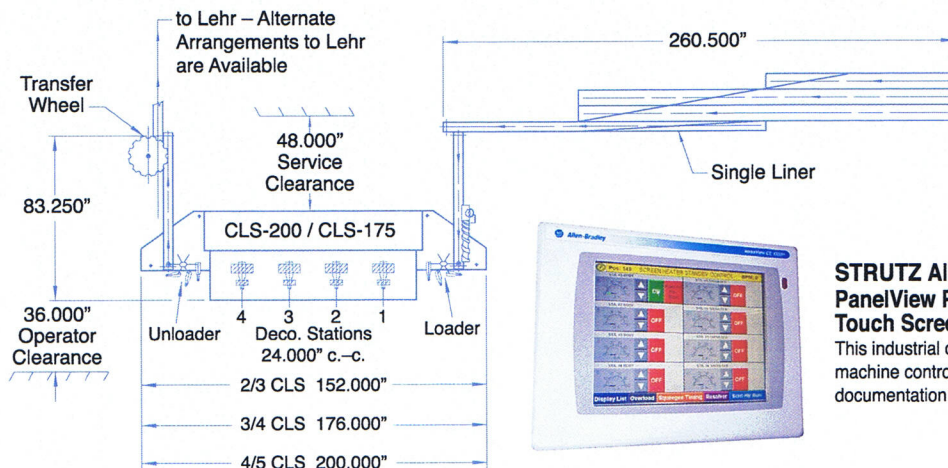
CLS-175

Chainless High Production Body and Shoulder Decorating Machine Designed for Larger Bottles.

The CLS-175 is a revolutionary design built for decorating a typical beverage bottle with maximum height of 13.5 in. and maximum diameter of 3.75 in. with the same HIGH ACCURACY as the CLS-200 machine. The CLS-175 maintains similar performance characteristics to the CLS-200 machine.

For information on the complete line of STRUTZ equipment and services, visit our website: www.strutz.com.

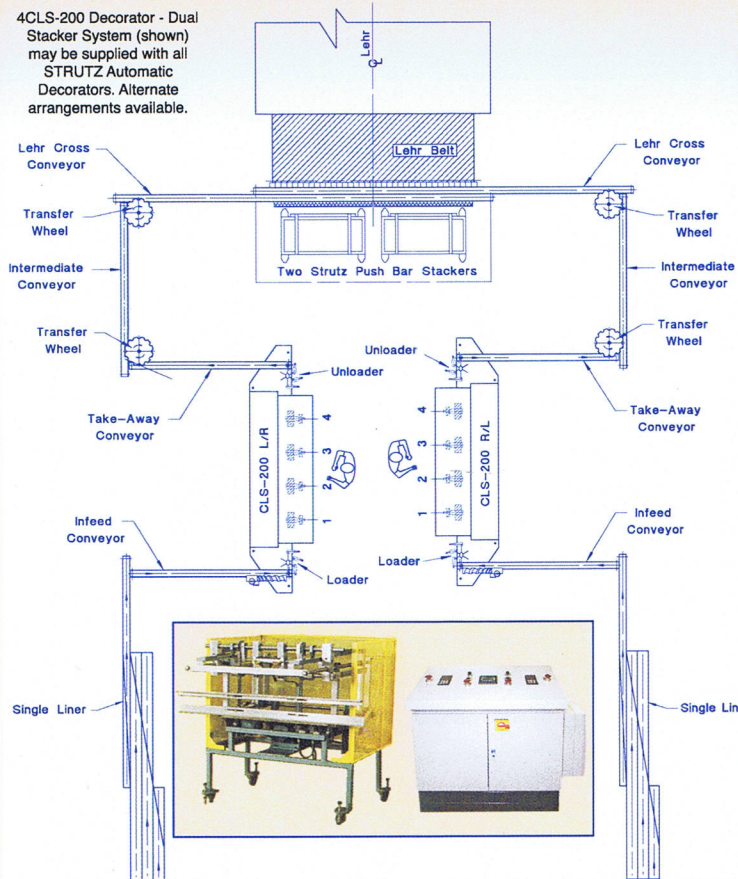
CLS-200 & CLS-175 TYPICAL FLOOR LAYOUT (RIGHT HAND)



STRUTZ Allen Bradley PanelView Plus CE1000 Color Touch Screen Control Panel
This industrial computer provides machine control as well as documentation and assembly drawings.

Dual Feed Stacker with Electronically Synchronized Lehr Cross Conveyor System

4CLS-200 Decorator - Dual Stacker System (shown) may be supplied with all STRUTZ Automatic Decorators. Alternate arrangements available.



Strutz International has developed a new container conveying system designed for the loading of one decorating Lehr using two STRUTZ Automatic Decorators. The system completely fills the Lehr, and when required, easily adapts to a one decorator system. Two STRUTZ Push Bar Stackers are utilized for Lehr loading from two STRUTZ Decorators. The stackers are equipped with our optional bi-directional push bar side motion modification. When only one decorator is in operation, both stackers can be operated in unison by simply pushing keypad terminal on operator interface.

Automatic Bottle Decorators

CLS-200 Chainless
CLS-175 Chainless
CS-150 • CS-125

STRUTZ AUTOMATIC BOTTLE DECORATORS ARE PROTECTED BY ONE OR MORE OF THE FOLLOWING U.S. PATENTS AND FOREIGN PATENTS CORRESPONDING TO THE U.S. PATENTS LISTED BELOW:

5,524,535 6,073,533 6,079,326
6,257,136 6,581,750
OTHER PATENTS PENDING

Tumbler Decorators

4CS-75T • 6CS-75T

Lehr Loading Stackers

Push Bar • Pull Bar
Dual Stacker System

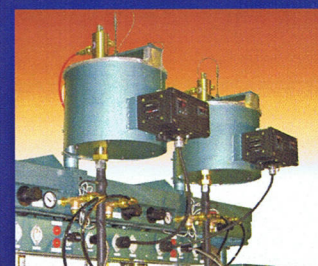
STRUTZ Conveyors

Single Liner
Cross Conveyor
Dual Cross Conveyor
Transfer Wheel

Specialized Equipment

ECD-DSL-1 • ECD-DSL-2

Automatic Electronic Controlled Color Dispensing System



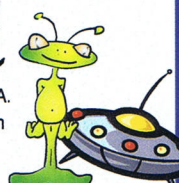
NEW DSL Control

Performance Proven Worldwide



Strutz International

P.O. Box 509 • Mars Valencia Road • Mars, PA 16046 • U.S.A.
Tel: (724) 625.1501 • Fax: 625.3570 • E-Mail: info@strutz.com
www.strutz.com



Machines From Mars